

10 reasons why you should start using DTX Studio™ Clinic

1

All digital imaging needs at one place

- 2D X-ray intraoral images
- 2D panoramic images
- 3D scans (CBCT)
- Clinical photos
- Digital impressions from intraoral scanner
- Intraoral camera photos
- Face scans

2

Direct connection*

- DEXIS™
- Instrumentarium™
- Soredex™
- I-CAT™
- Gendex™ GXDP-700, GXDP-300
- DEXIS, 3Shape TRIOS® and Medit Intraoral scanners
- Third-party manufacturers 2D devices

* Please verify compatibility before making your purchase.

3

Wide data import and export options

Import

Intraoral and extraoral scans (STL, PLY), 2D drag-and-drop of jpg, bmp, png, tiff, DICOM (2D and 3D), lab scans (STL, PLY, NXA), implant rehabilitation plan (DTXIP)

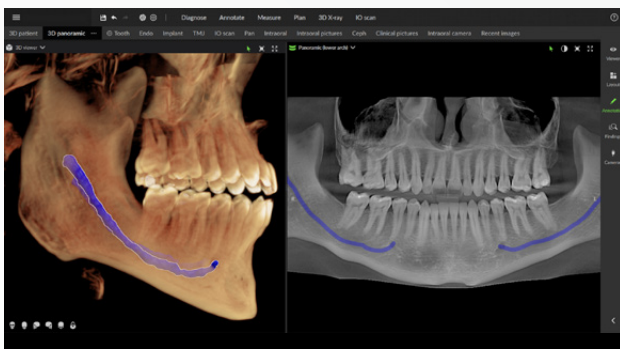
Export

2D and 3D DICOM files, STL, PLY, NXA, jpg, bmp, png, tiff, clinical photographs and intraoral scans, intraoral and extraoral X-rays

4

MagicAssist

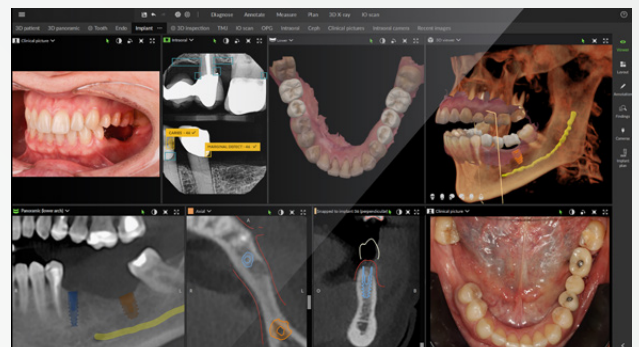
Use AI to automatically set up patient data by detecting points of interest. The CBCT data is automatically prepared by detecting tooth positions, OPG/PAN curves, patient orientation, bone threshold, level/window estimation, TMJ area reslice curves and mandibular nerves.



5

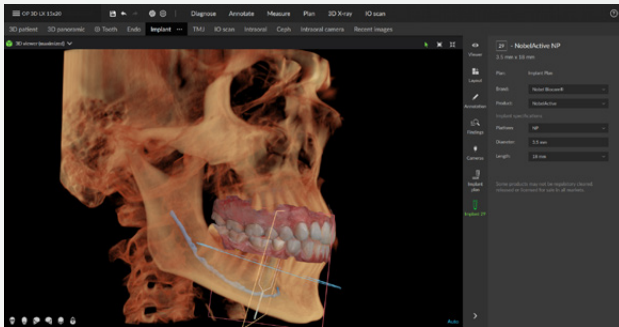
SmartLayout

The multimodal gallery that can display up to 12 views on a single screen, all grouped by location and dynamically saved for future reference.



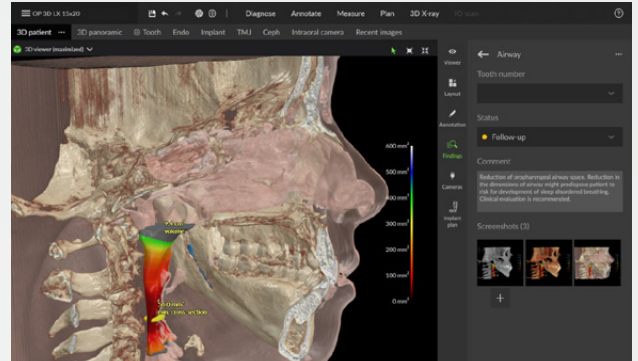
6 SmartFusion

An automatic, intelligent way of combining surface models from all intraoral and desktop scanners with any CBCT scan using voxel-based algorithms.



7 AirSpace

Visualize and measure the upper respiratory tract by indicating two landmarks and instantly present the view to the patient, or refer the findings to the specialist.



8 2D AI Dental Findings feature

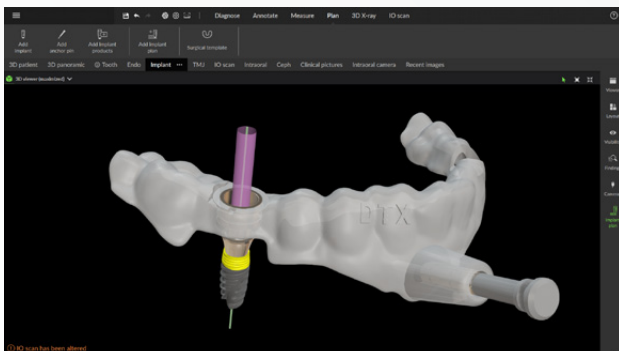
Automatically identify up to six common potential dental findings on 2D radiographs, prompting you to evaluate each one.

- Caries
- Calculus
- Periapical radiolucency
- Bone loss
- Root canal filling deficiency
- Discrepancy at margin of existing restoration



9 Surgical templates

Design a surgical template for 3D printing in just a few clicks. The template can be downloaded in high-resolution STL format for self-printing or sending to a dental lab.



10 SmartFocus

Fast, precise and effortless navigation across all imaging modalities simply by clicking on the tooth of interest in the CBCT scan or on an intraoral X-Ray to focus on all information you have on file. Contextual images can be added in SmartLayout and are dynamically stored per site.



Discover the full list of features with detailed description at DEXIS.com