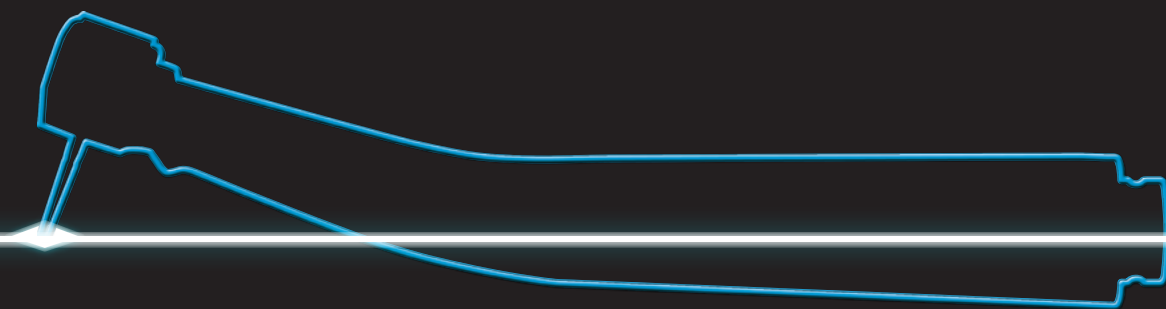


Air Turbine Handpiece

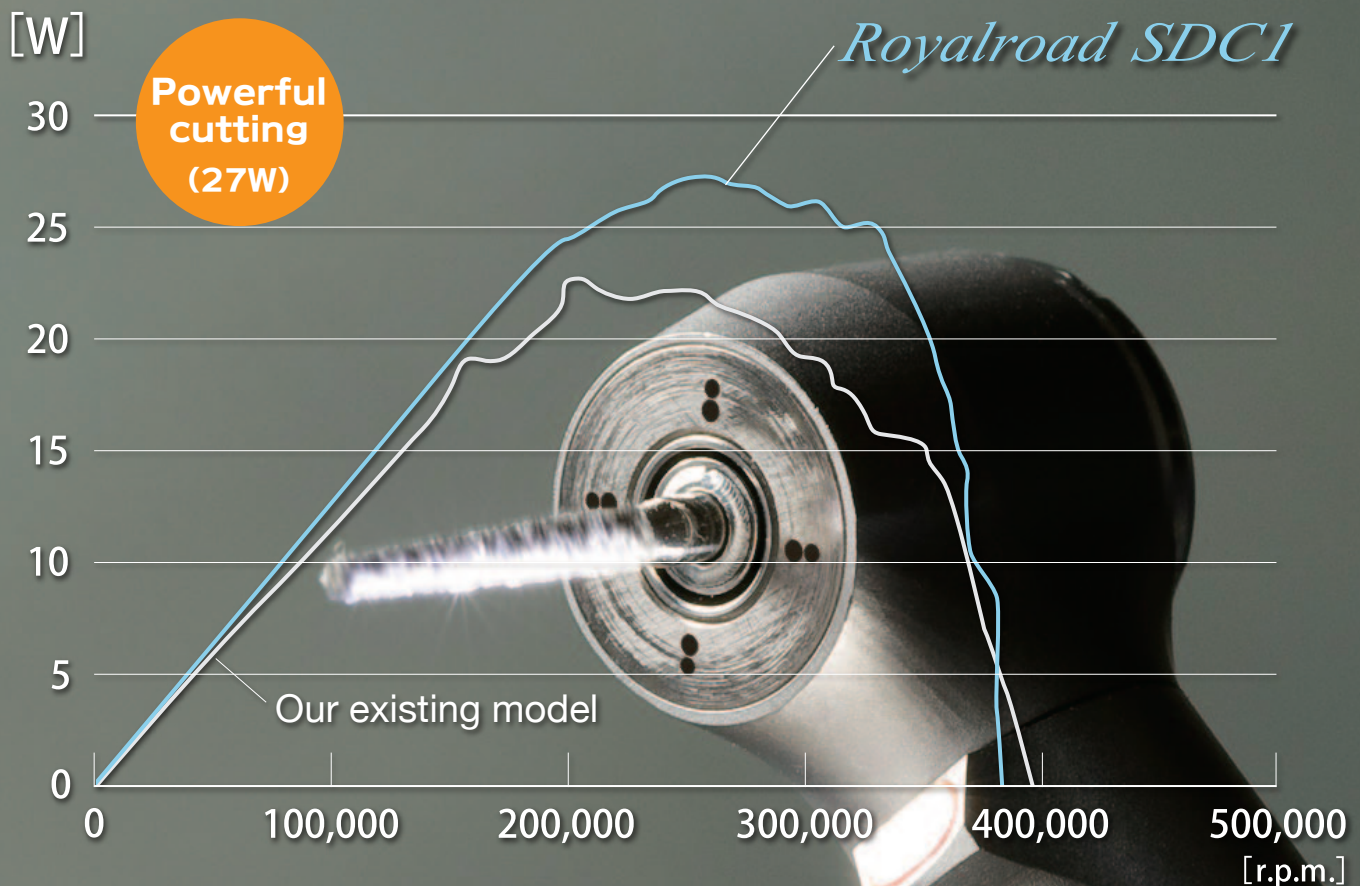
Royalroad SDC1

Super Dynamic Charger



Serves all needs

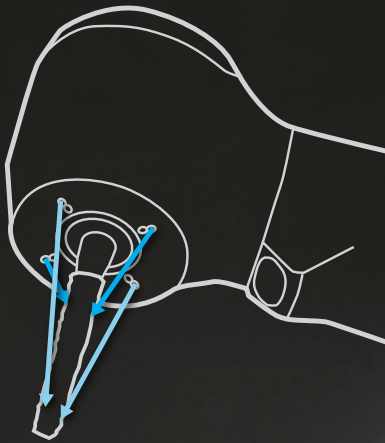
“Cutting power certainly isn’t everything
but surely the **great-to-have** feature!”



Royalroad delivers powerful torque and can be utilized for all types of treatment.

- The cavity preparation, removal of resin or inlay, whatever required for the handpiece, Royalroad can do and more.
- Power brings additional benefit as it leads to the efficiency of the treatment resulting in the reduced chair time...time that is valuable for both the doctor and the patient.

“Optimum Spray System is one of the most important aspects of a handpiece performance.”



**MULTI
JET
SPRAY**

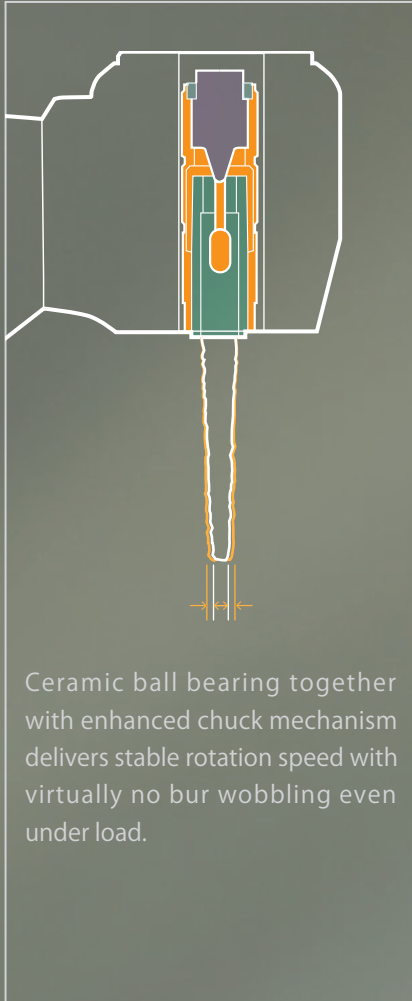
Royalroad provides excellent bur cooling effect on all types of bur by its revolutionary two-tier circumferential spray system, **“Multi Jet Spray”**.



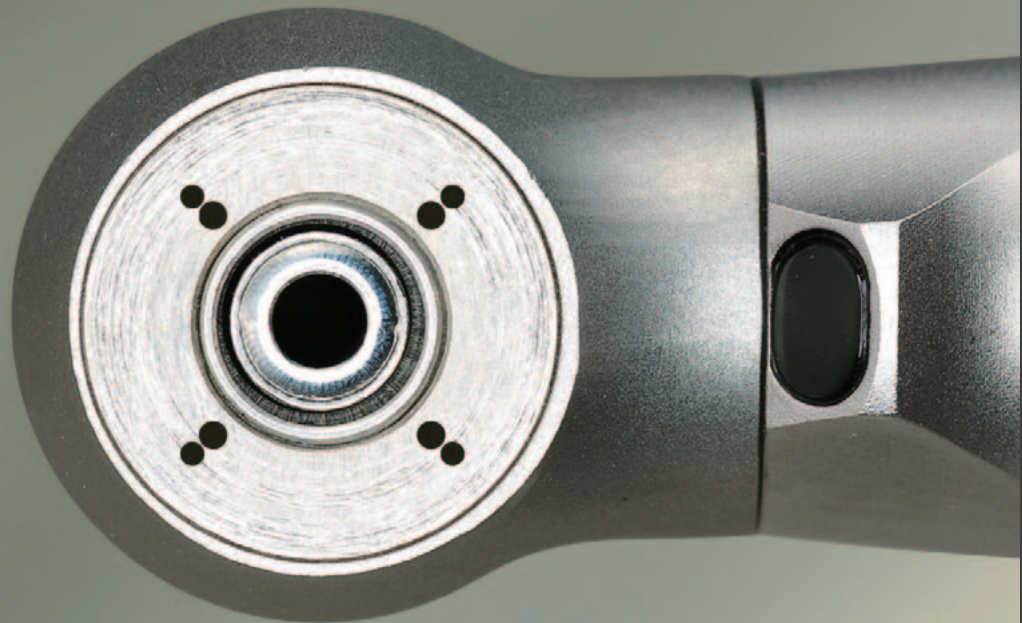
This “Multi Jet Spray” provides many more positive effects besides keeping the bur and the working point cooler.

- Effectively washes away the cutting debris and consequently prolongs the serving life of the bur resulting in the cost saving.
- Hits the bur at sharp angle to keep the mist from scattering giving a clear view of working site while eliminating the patient’s discomfort by the scattering water around the mouth.

*“Getting the **most** out of a **handpiece** requires more than powerful cutting and optimum cooling effect.”*



Ceramic ball bearing together with enhanced chuck mechanism delivers stable rotation speed with virtually no bur wobbling even under load.

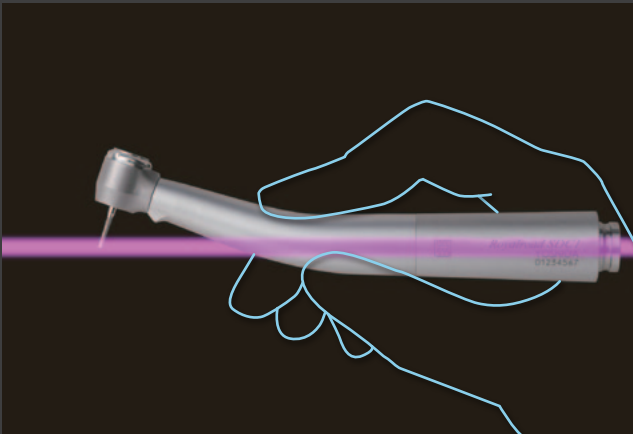


Royalroad has succeeded in achieving high torque with very little wobbling (0.25mm) ensuring the smooth finish of cutting surface.

- The doctor virtually feels no chattering of the handpiece while performing the superior preparation work with ease.

“Is that all?”

– No! Royalroad has many more *benefits...*



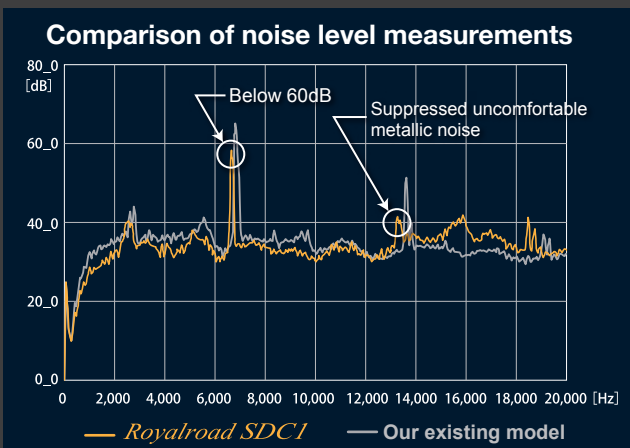
Body Contour that offers more than just the beauty.

Non-slip grip with calculated angle nicely rests in the hand of the doctor, giving the perfect control for precise work while reducing the stress on the operator's hand even with the hose connected. It is well-designed to keep the balance for high operability.



Lights up the way.

LED light feature of Royalroad provides perfect visibility even in the narrow working site and hard to reach region. It enables the doctor to work with precision while reducing the eyestrain even in the long duration of treatment.



Sound makes the difference in the treatment room.

Sound and noise are different in nature.... Royalroad is designed to suppress the unappreciated noise to ease patient's fear and discomfort while keeping the comfortable level of sound to ensure the doctor that it is properly running. It helps the doctor to focus on the procedures while creating the relaxed atmosphere in the treatment room.

Royalroad SDC1



Technical data

Water spray system	4 WAY SPRAY
Water spray volume	Above 50 mL/min
Head Size	φ 11 x H 12.7mm
Power	27W
Weight	61g
Chuck Types	PUSH
Cartridge	Direct-mount type
Ball Bering	Ceramic
Noise level	59dB
Supply air pressure	0.18±0.28 Mpa
Spray water pressure	0.20 ±0.01 Mpa
Maximum air consumption (at 0°C and 1 atmosphere pressure)	50L/min

No-Load rotation speed	360,000 ~ 420,000 r.p.m
Shank diameter	φ 1.59 ~ 1.60mm
Shank Length	Above 11mm
Bur Type	Standard Bur
Coupling*	Yoshida Quick Joint LX-503 (with simple one-click action feature)
Light	Glass optic rod
Optical bulb (Coupling)	LED
Maintenance Oil*	Yoshida Oil

* Sold separately.

The product specifications vary depending on the area of purchase. Please contact our international business division department for more information.

Copyright © 2012 THE YOSHIDA DENTAL MFG. CO., LTD.

All right reserved. No part of this publication may be reproduced in any form without the written permission of The Yoshida Dental Mfg. Co., Ltd.

CONTACT

YOSHIDA

THE YOSHIDA DENTAL MFG. CO., LTD.

Address 1-3-6 Kotobashi, Sumida-ku Tokyo, Japan ZIP 130-8516

TEL +81-3-3631-2165 FAX +81-3-3631-2685 (International Business Div.)



MD 554641/ISO 13485 : 2003



FM 554640/ISO 9001 : 2008